



Hollybush Lane

Harpenden, AL5 4AT

Stunning, four bedroom apartment occupying the entire ground floor and garden of this converted, detached Edwardian villa in a sought after, central location. Benefitting from large orangery to the rear of the kitchen and living room, two bathrooms and off-street parking for four cars. Beautiful private south facing, 90ft garden with home office & garden room. Ideally located for excellent schooling and a short walk to the town centre and station. Share of Freehold.

Guide price £1,395,000

Hollybush Lane

Harpenden, AL5 4AT



- Immaculate ground floor apartment
- Close to excellent schools
- Walking distance to town centre & station
- Four bedrooms
- South-facing 90ft private garden
- Share of Freehold
- Sought after central location
- Off-street parking for four cars
- Council Tax Band D

Entrance Hall

Cloakroom

Kitchen / Dining Room

24'4" x 12'8" (7.42 x 3.87)

Living Room

14'9" x 13'3" (4.52 x 4.06)

Breakfast Room

10'9" x 10'7" (3.30 x 3.24)

Bedroom One

14'11" x 11'11" (4.55 x 3.65)

Bedroom Two

18'0" x 8'4" (5.50 x 2.56)

Bedroom Three

9'6" x 9'5" (2.92 x 2.89)

Bedroom Four

11'1" x 9'10" (3.40 x 3)

Bathroom

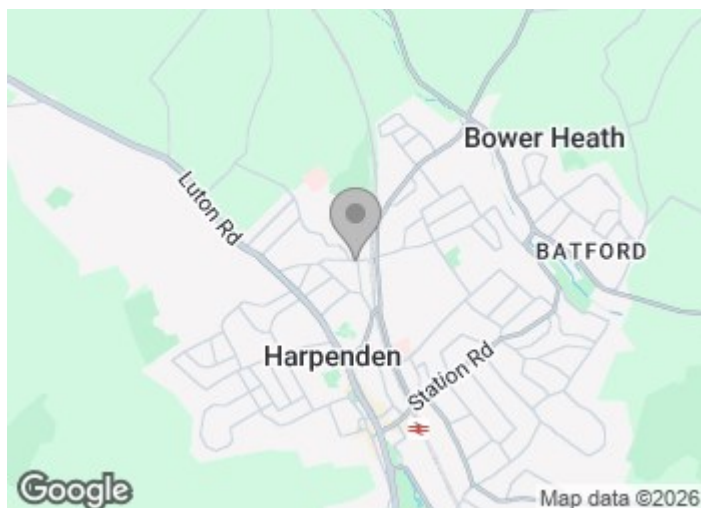
Shower Room

Home Office

17'4" x 9'8" (5.29 x 2.95)

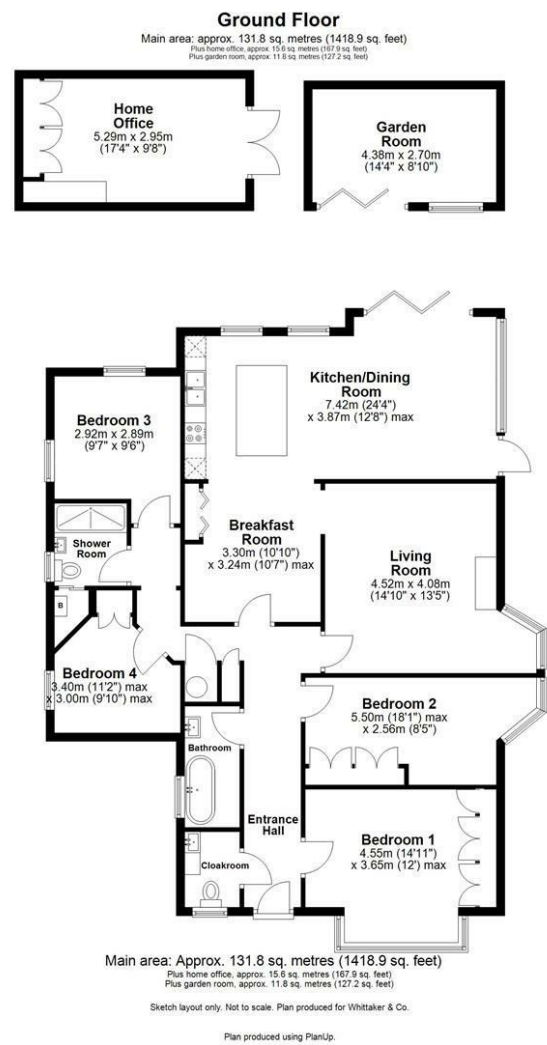
Garden Room

14'4" x 8'10" (4.38 x 2.70)





Floor Plan



These particulars, whilst believed to be accurate are set out as a general outline only for guidance and do not constitute any part of an offer or contract. Intending purchasers should not rely on them as statements of representation of fact, but must satisfy themselves by inspection or otherwise as to their accuracy. No person in this firms employment has the authority to make or give any representation or warranty in respect of the property.

